

Using These Measurements

This document contains the approximate room measurements for Smith Hall. We recommend that it be viewed in Adobe Acrobat, which can be downloaded at Adobe's website, www.adobe.com/reader.

Because there are many configurations available for every area, these layouts and measurements should be seen as general guidelines. All measurements and drawings are made to scale, however the drawings may not reflect all aspects of every room. There may be architectural features that do not allow furniture to fit into a space. We recommend saving all receipts for purchased furnishings just in case they won't fit.

The Housing and Residence Life main office is available for questions at reslife@samford.edu or (205)726-2956. We will do our best to provide any details or measurements we currently possess but we cannot promise to provide answers to all possible questions. Visiting rooms before move-in is not allowed.

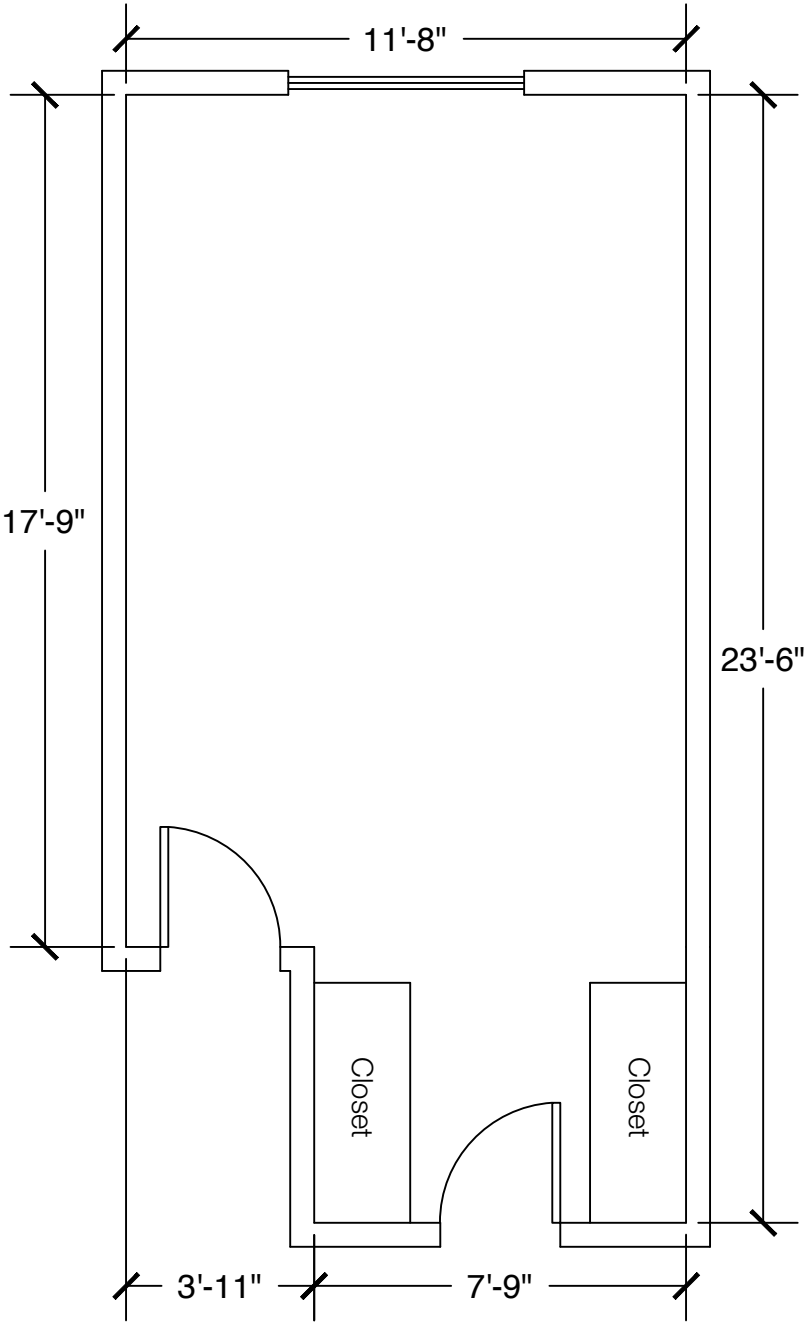
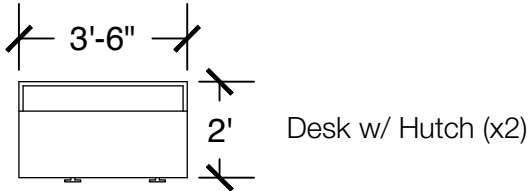
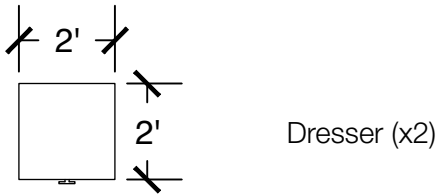
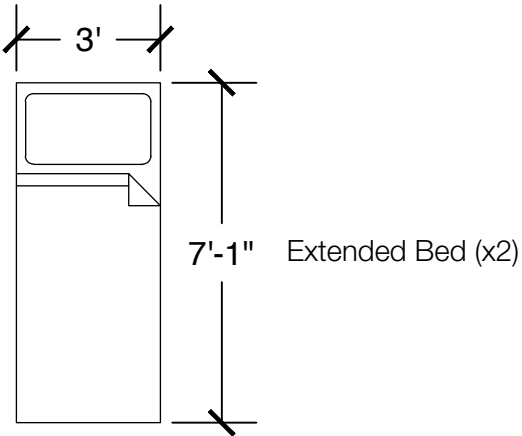
Finding Your Room Configuration

In order to find the configuration for your room, we recommend you utilize the Find command built into most PDF viewers. In Adobe Acrobat, use your mouse to click on Find under the Edit menu. You can also press Control+F if you use Windows or Command+F if you use a Mac.

If you were searching for Smith 302, type in "302" and hit Enter. It should take you to the page that contains the measurements for your room. You can verify this by looking at the bottom left of the page under the "Configuration Notes"; it will list all rooms which that configuration is applicable to.

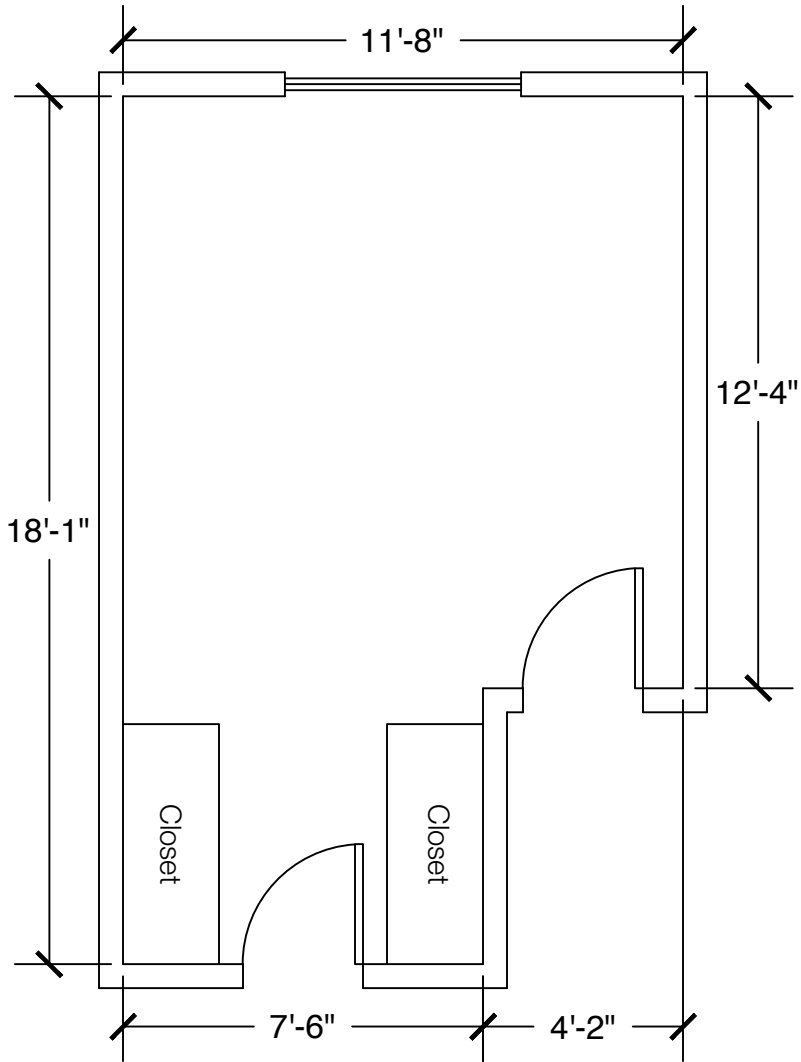
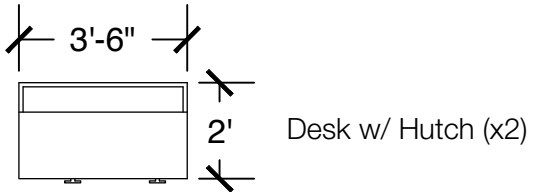
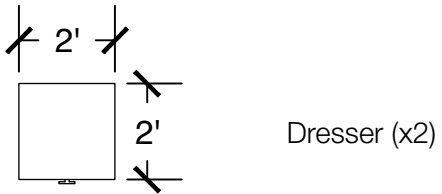
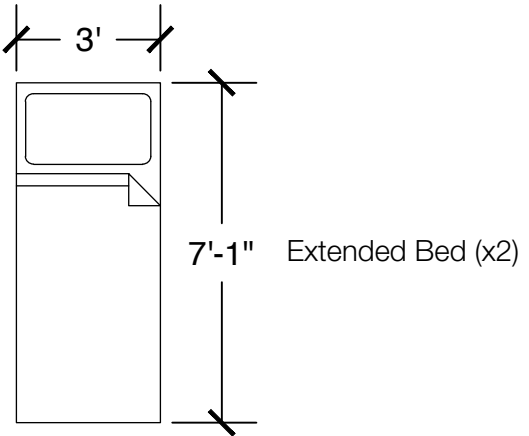
Other Tips

All Samford owned furniture must stay in the room. Residents are welcome to bring in their own furniture and rearrange provided furniture but the Samford owned furniture may not leave the room or be stored elsewhere. Furniture may not be in the same layout as the drawing at move-in.



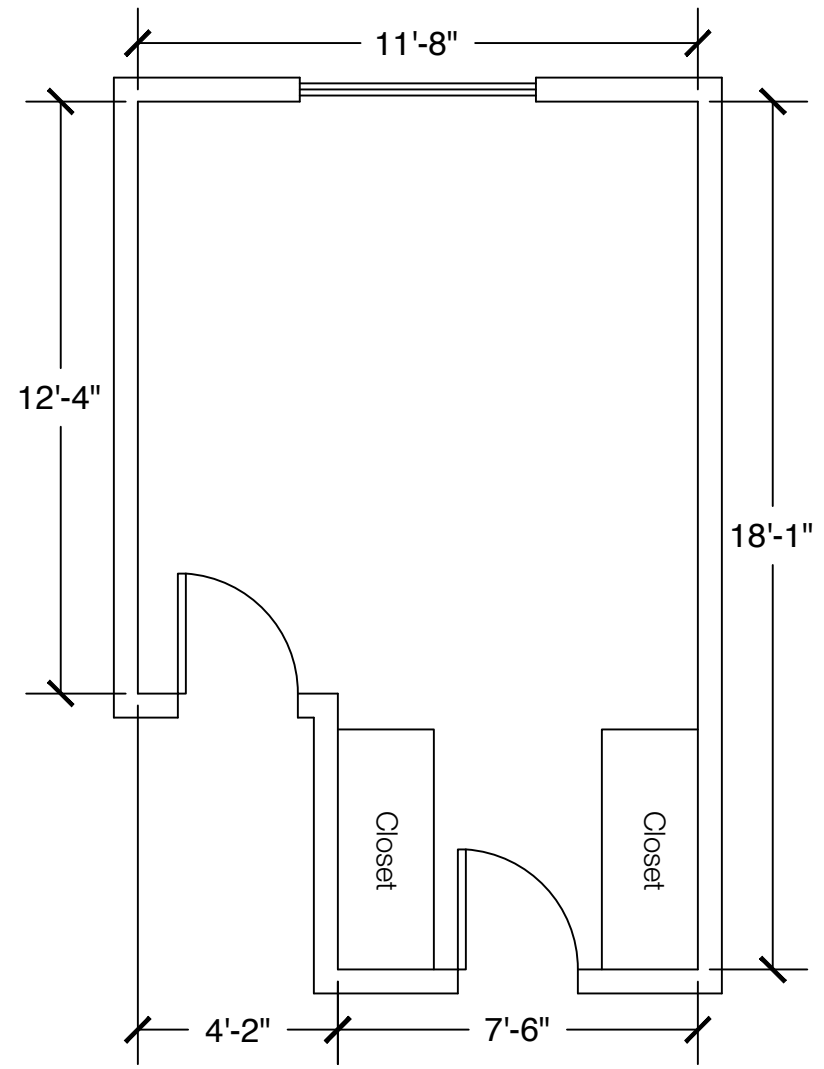
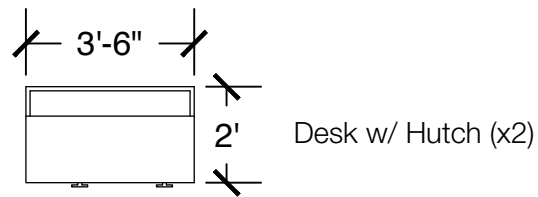
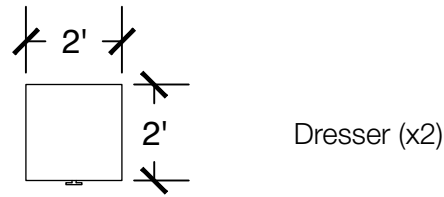
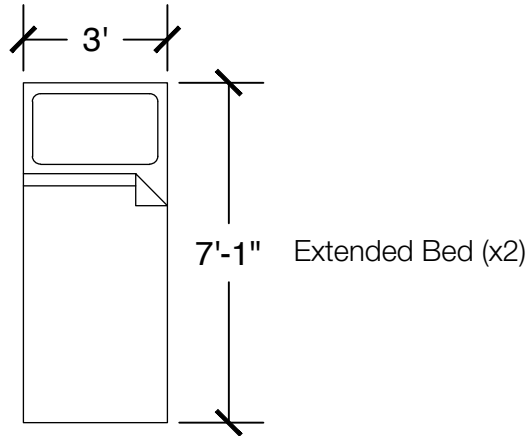
Configuration Notes:

Applicable to Smith 251 and 352
 All drawings are 1/4"=1'-0" scale
 Dimensions are meant to be general figures and may not be exact



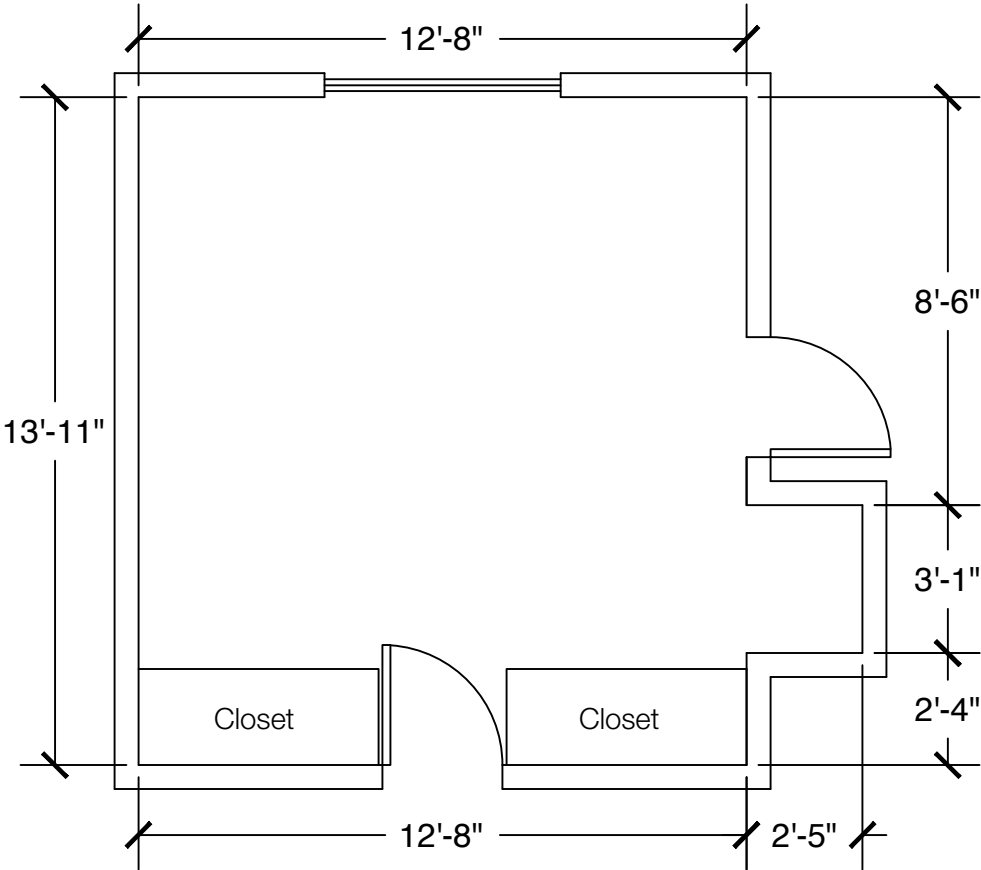
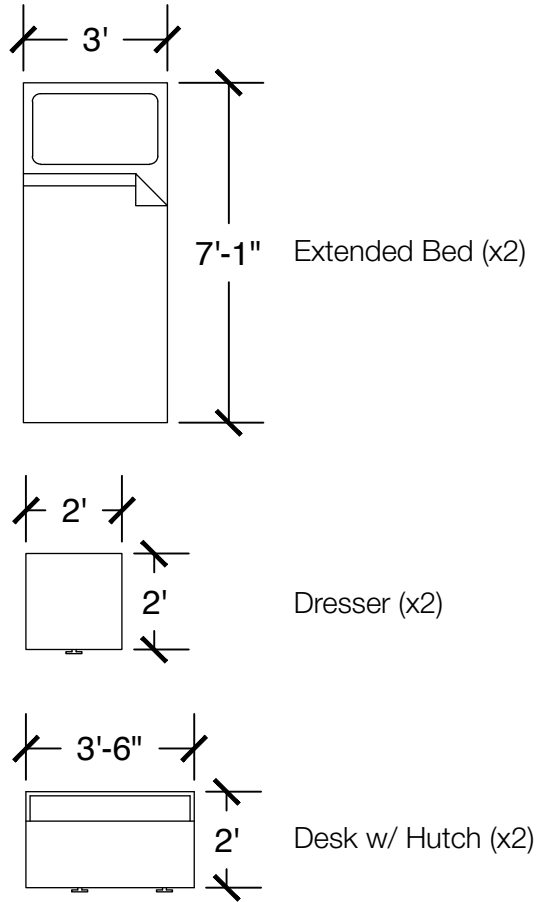
Configuration Notes:

Applicable to Smith 103, 104, 107, 108, 151, 155, 156, 159, 205, 206, 208, 211, 253, 256, 258, 259, 305, 306, 308, 311, 353, 354, 357, 359, 360
 All drawings are 1/4"=1'-0" scale
 Dimensions are meant to be general figures and may not be exact



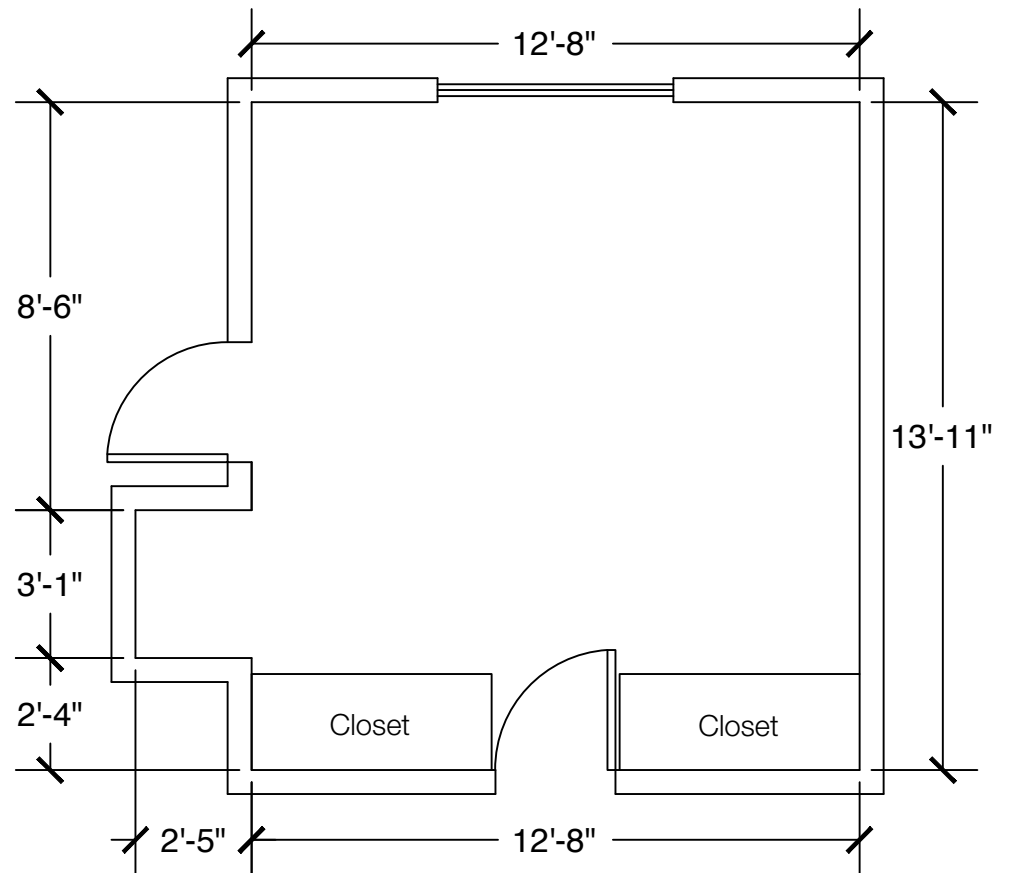
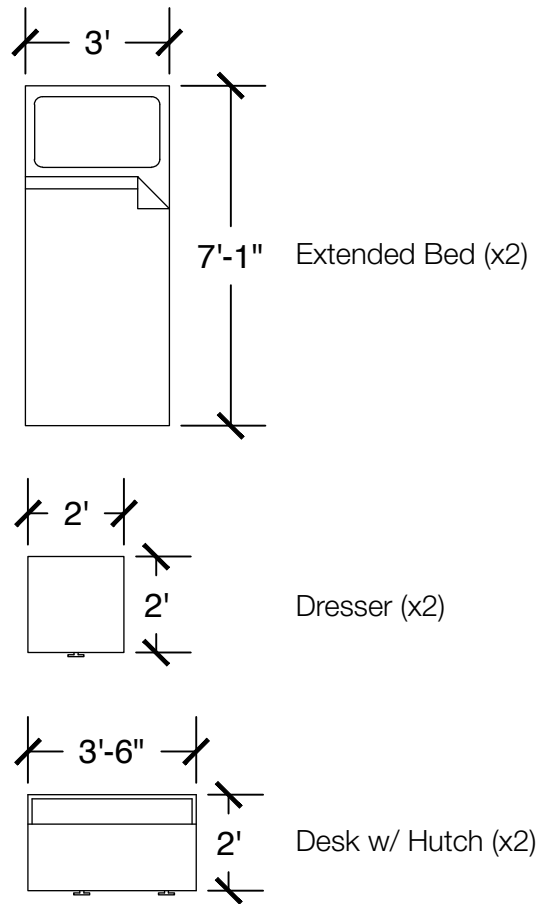
Configuration Notes:

Applicable to Smith 101, 105, 106. 109, 153, 154, 157, 158, 203, 204, 207, 209, 210, 255, 257, 260, 303, 304, 307, 309, 310, 355, 356, 358, 361
 All drawings are 1/4"=1'-0" scale
 Dimensions are meant to be general figures and may not be exact



Configuration Notes:

Applicable to Smith 111, 160, 212, 262, 312, 363
 All drawings are 1/4"=1'-0" scale
 Dimensions are meant to be general figures and may not be exact

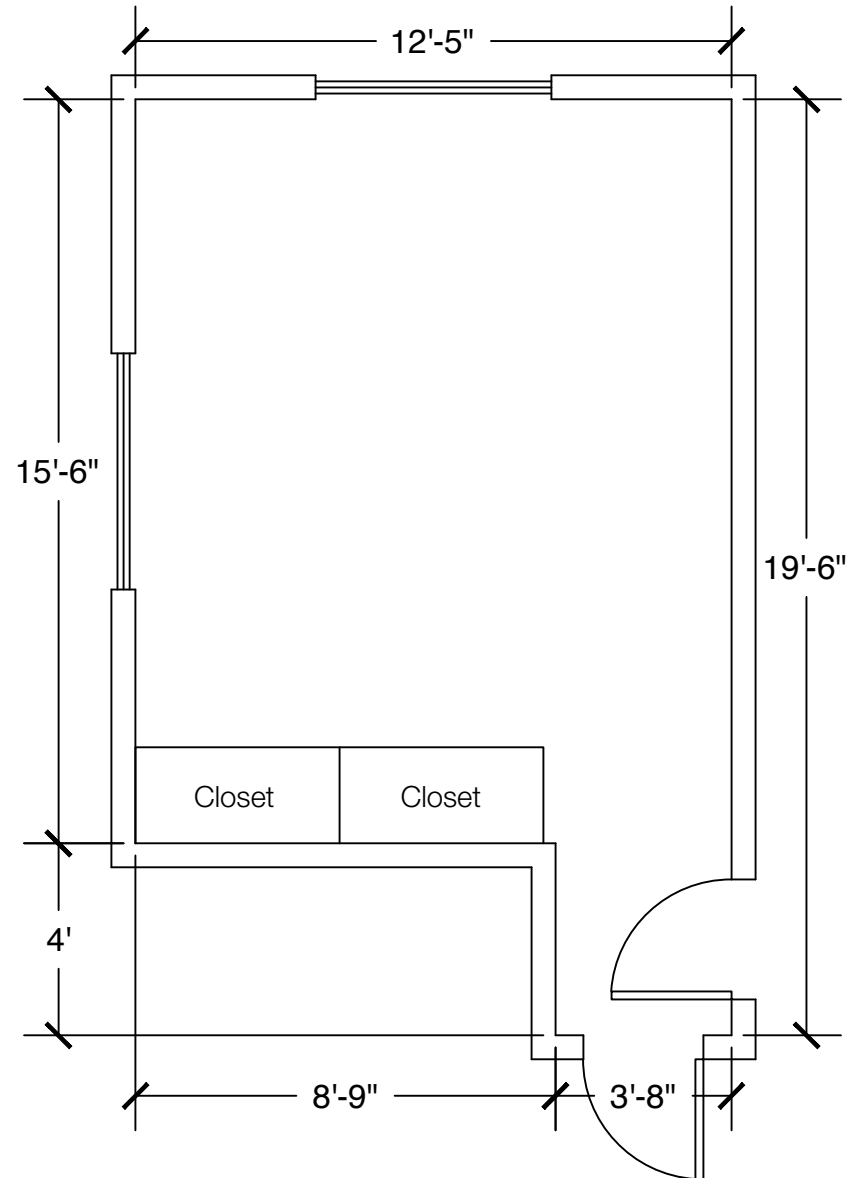
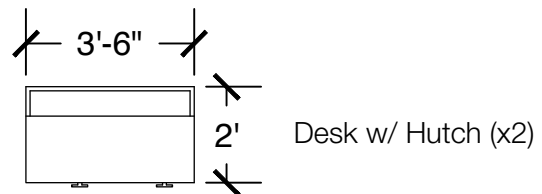
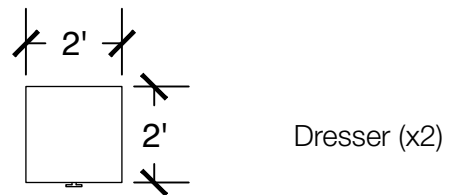
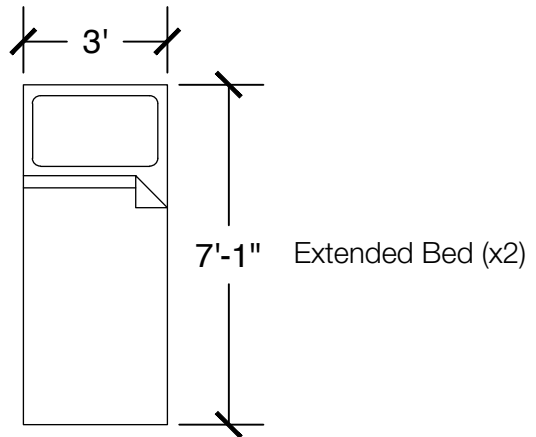


Configuration Notes:

Applicable to Smith 110, 161, 213, 261, 313, 362

All drawings are 1/4"=1'-0" scale

Dimensions are meant to be general figures and may not be exact

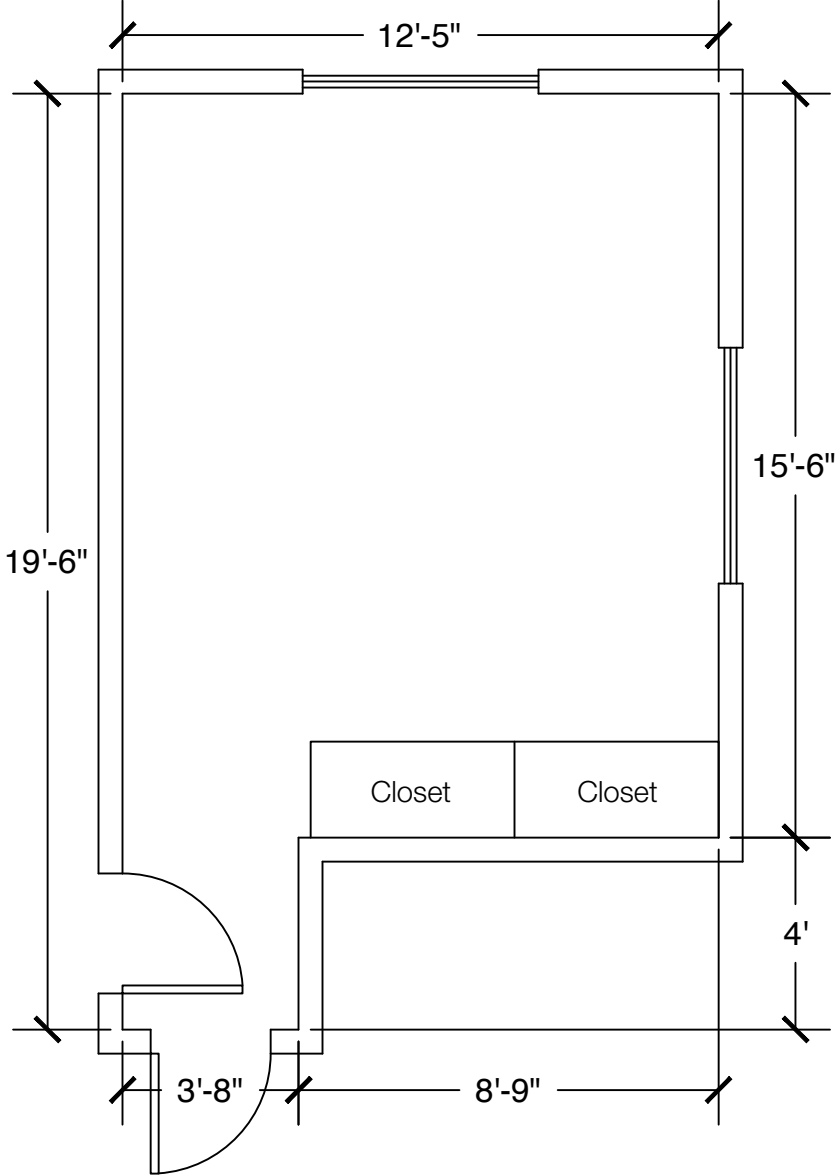
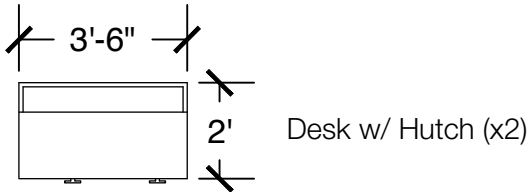
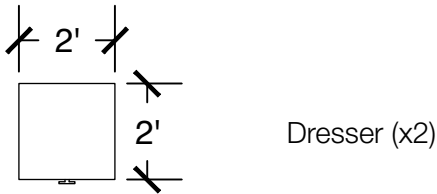
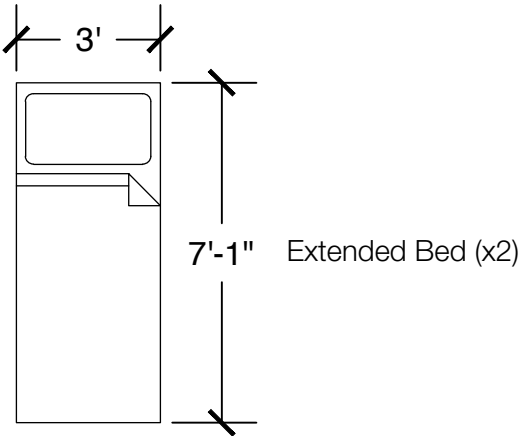


Configuration Notes:

Applicable to Smith 113, 162, 214, 264, 314, 365

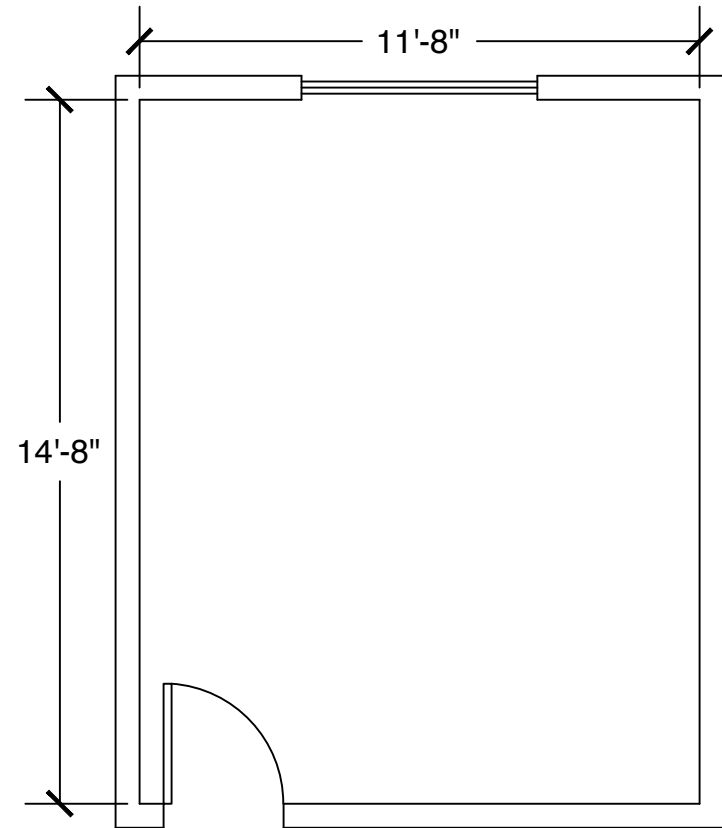
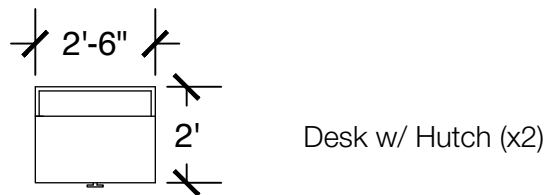
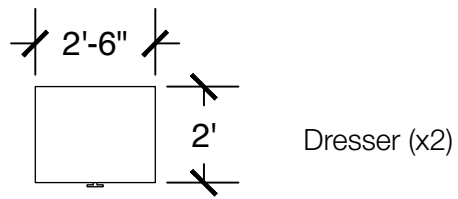
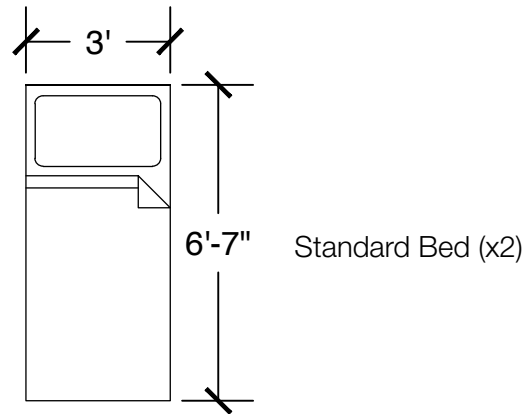
All drawings are 1/4"=1'-0" scale

Dimensions are meant to be general figures and may not be exact



Configuration Notes:

Applicable to Smith 112, 163, 215, 263, 315, 364
 All drawings are 1/4"=1'-0" scale
 Dimensions are meant to be general figures and may not be exact

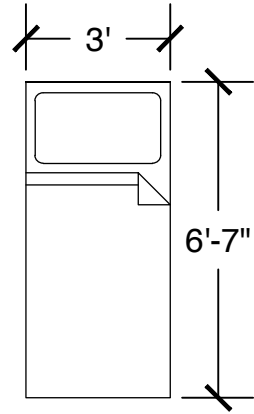


Configuration Notes:

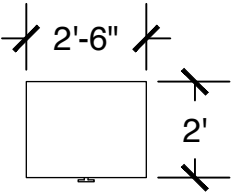
Applicable to Smith 200 and 300 BC

All drawings are 1/4"=1'-0" scale

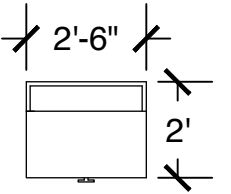
Dimensions are meant to be general figures and may not be exact



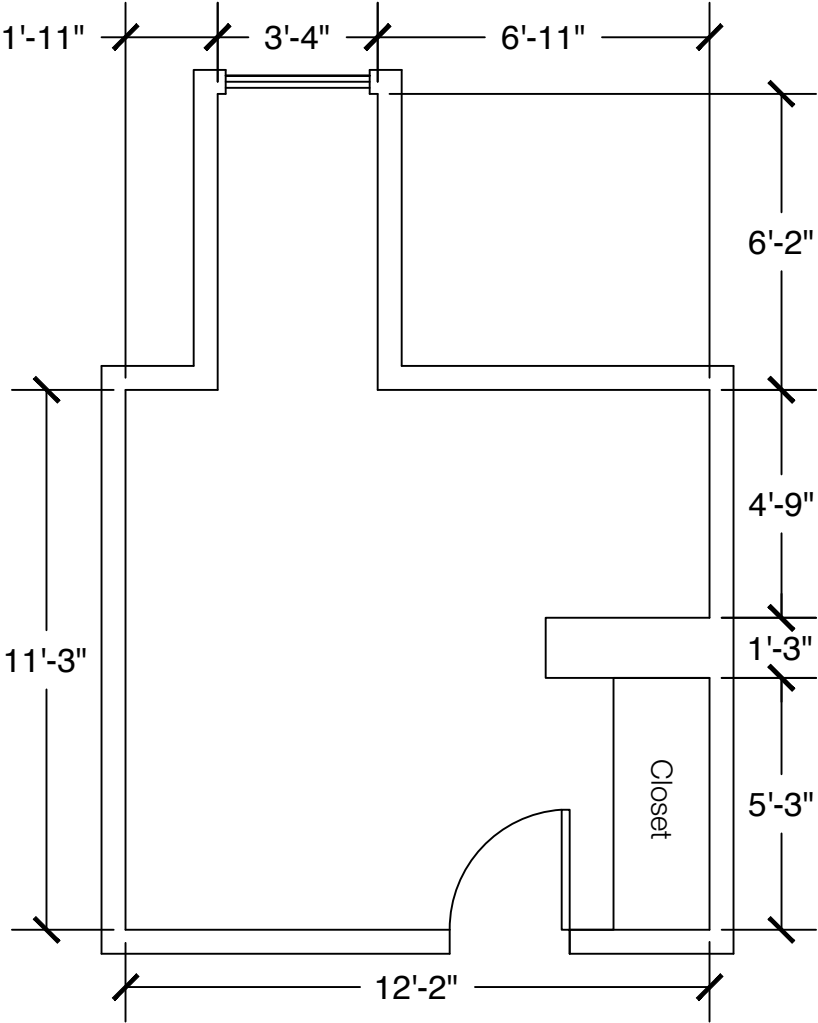
Standard Bed (x2)



Dresser (x2)

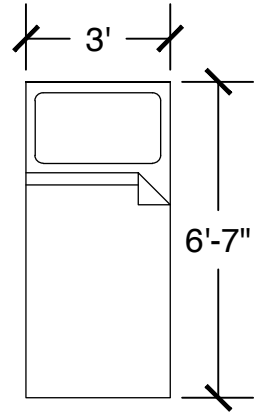


Desk w/ Hutch (x2)

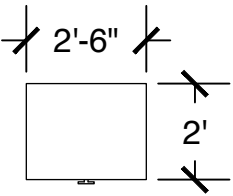


Configuration Notes:

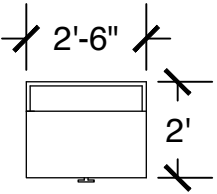
Applicable to Smith 452
 All drawings are 1/4"=1'-0" scale
 Dimensions are meant to be general figures and may not be exact



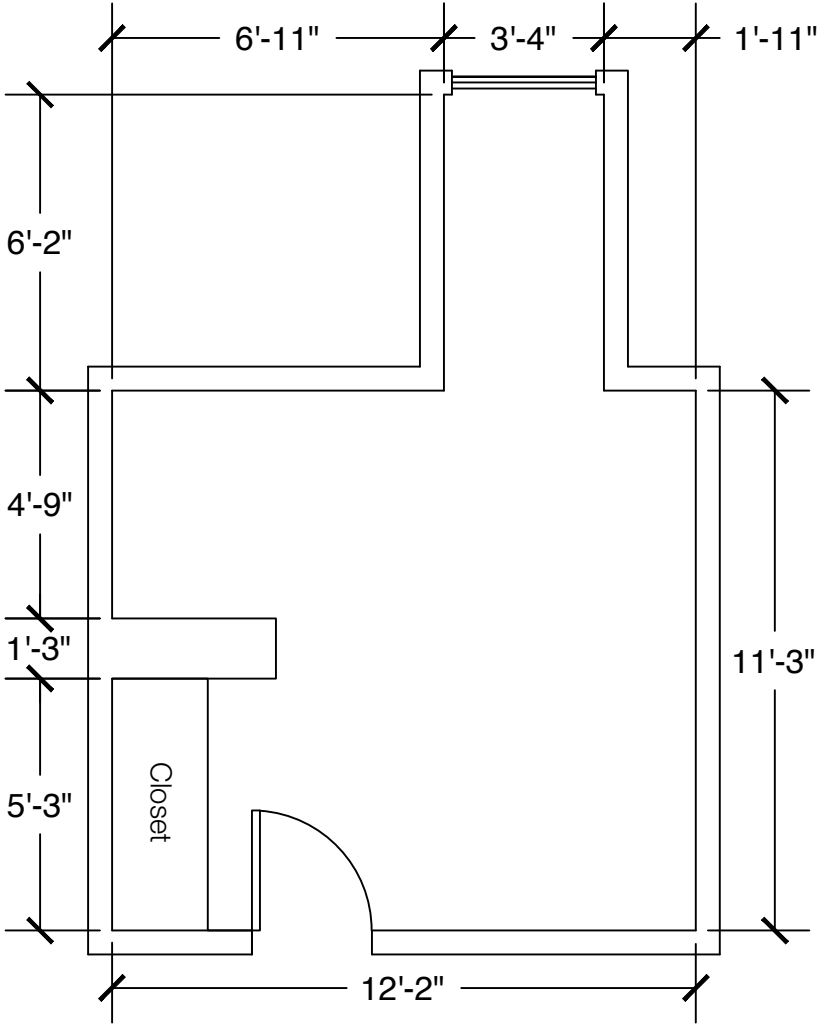
Standard Bed (x2)



Dresser (x2)

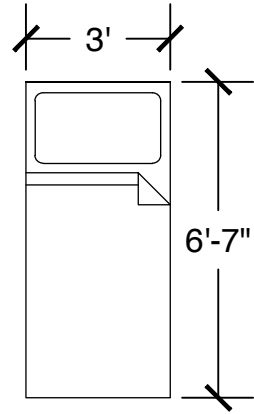


Desk w/ Hutch (x2)

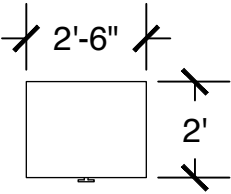


Configuration Notes:

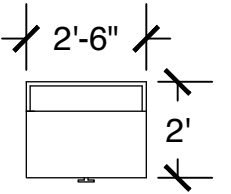
Applicable to Smith 402
 All drawings are 1/4"=1'-0" scale
 Dimensions are meant to be general figures and may not be exact



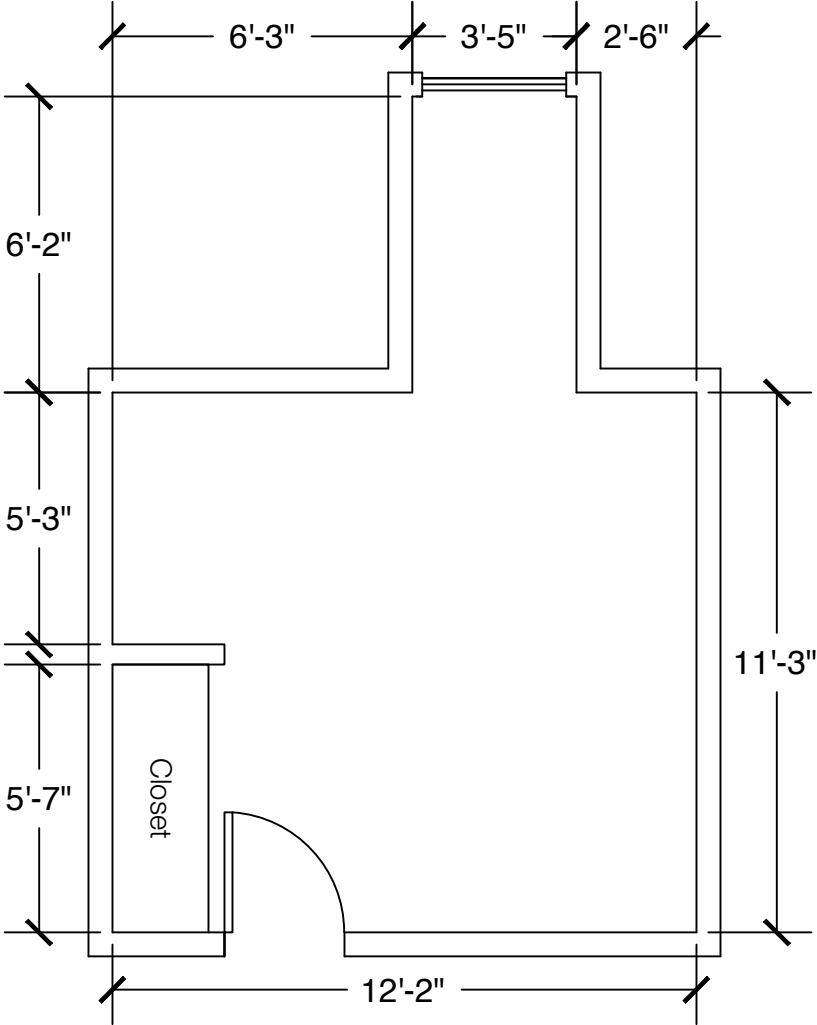
Standard Bed (x2)



Dresser (x2)

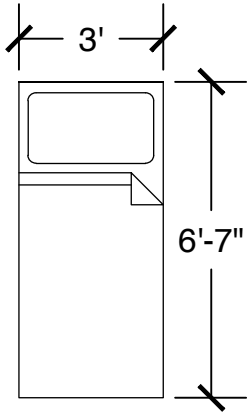


Desk w/ Hutch (x2)

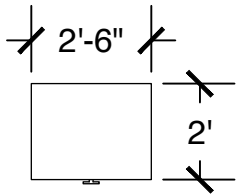


Configuration Notes:

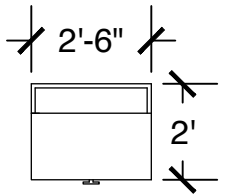
Applicable to Smith 404 and 453
 All drawings are 1/4"=1'-0" scale
 Dimensions are meant to be general figures and may not be exact



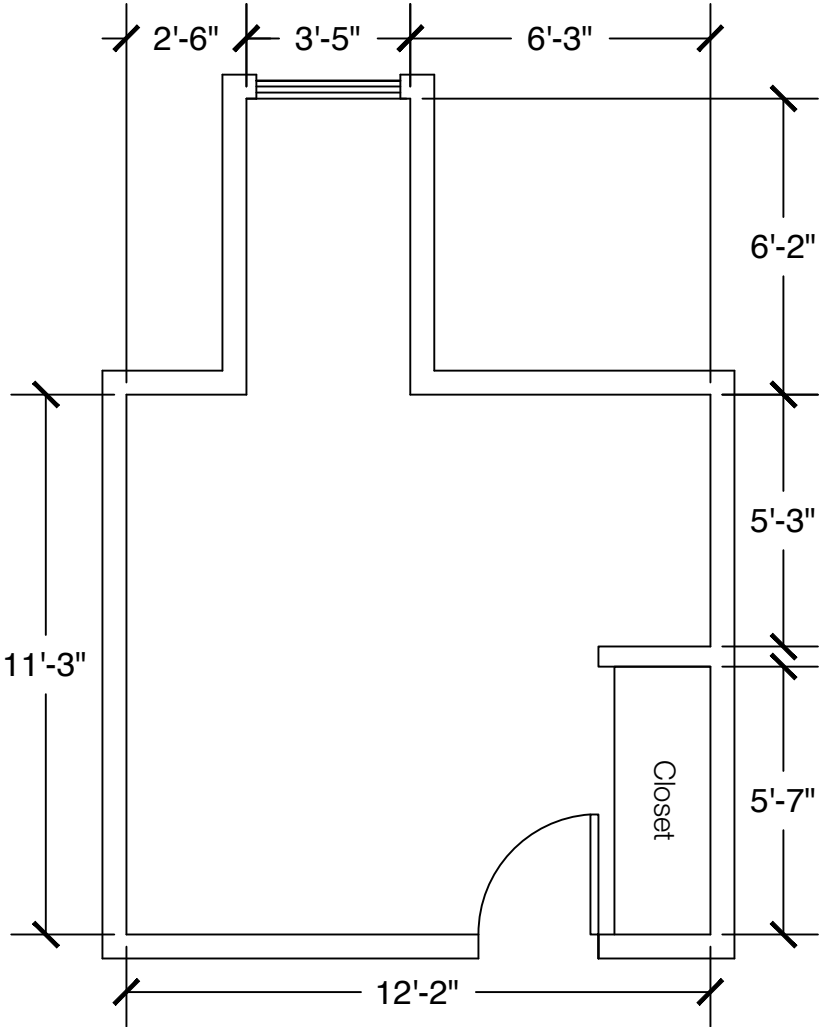
Standard Bed (x2)



Dresser (x2)

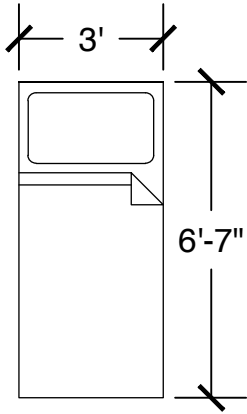


Desk w/ Hutch (x2)

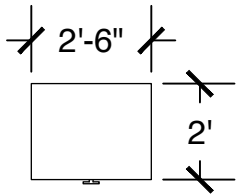


Configuration Notes:

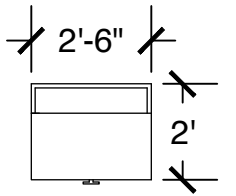
Applicable to Smith 403 and 454
 All drawings are 1/4"=1'-0" scale
 Dimensions are meant to be general figures and may not be exact



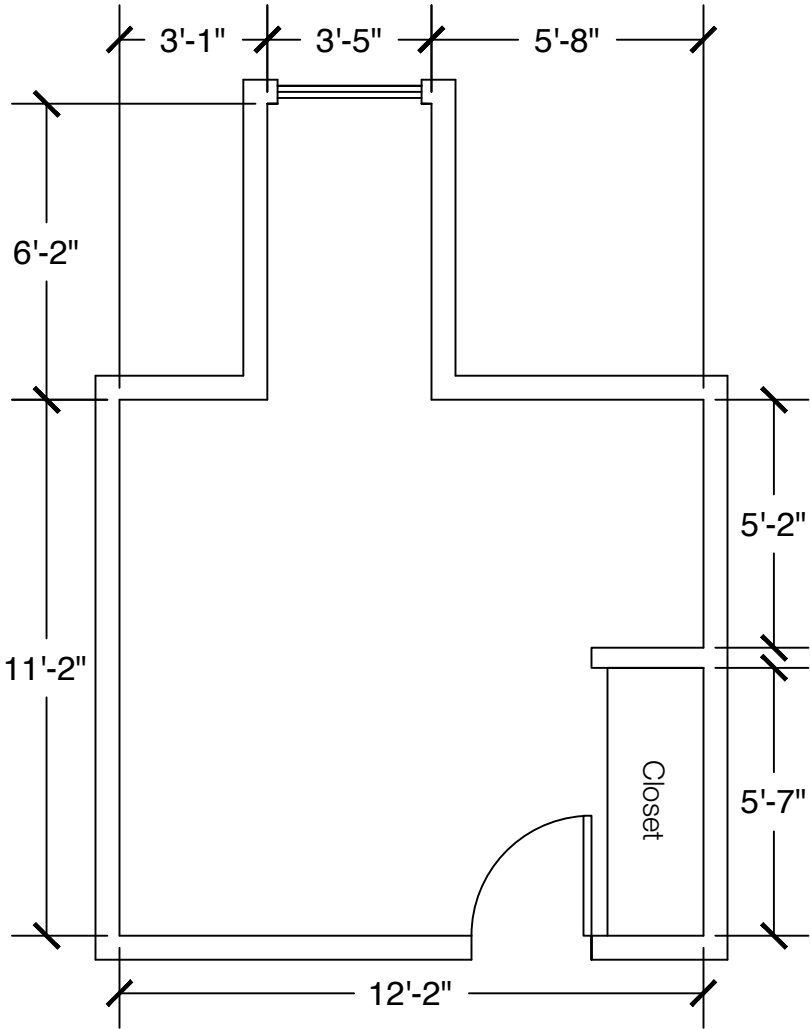
Standard Bed (x2)



Dresser (x2)

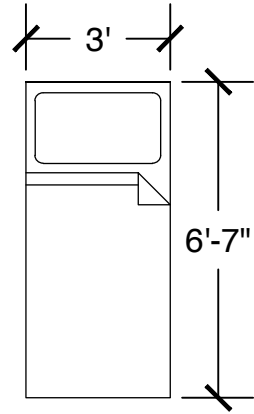


Desk w/ Hutch (x2)

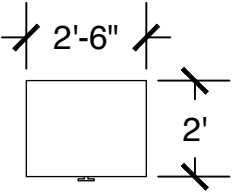


Configuration Notes:

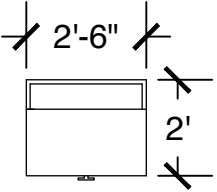
Applicable to Smith 405 and 456
 All drawings are 1/4"=1'-0" scale
 Dimensions are meant to be general figures and may not be exact



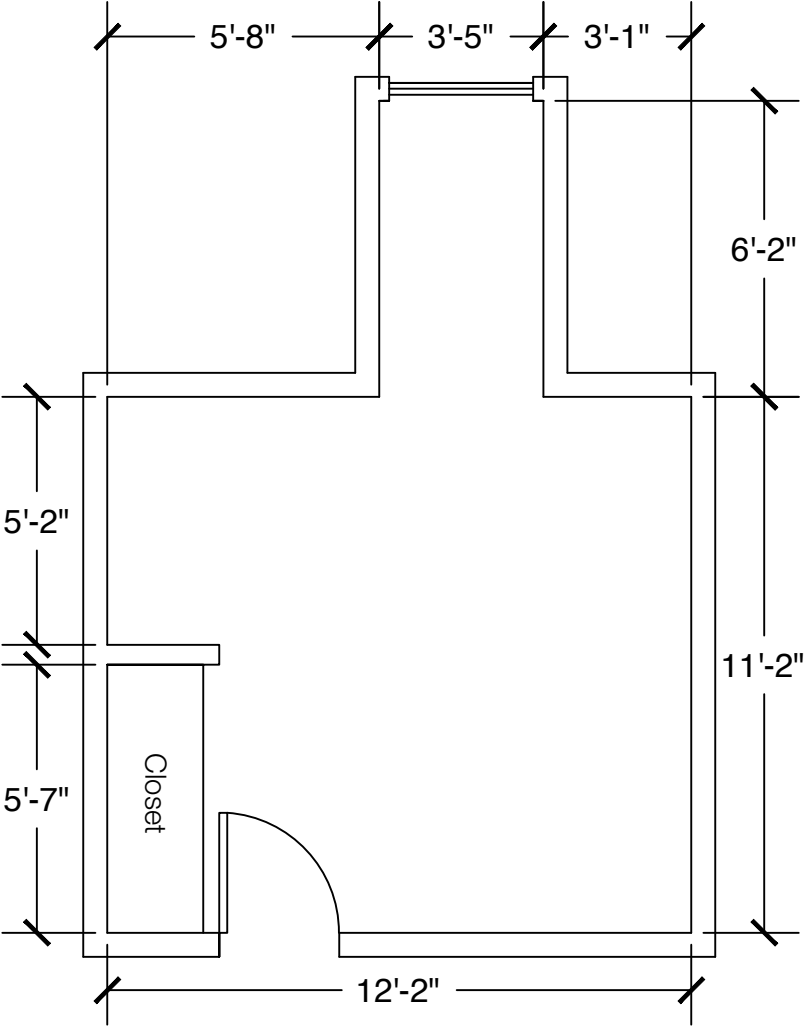
Standard Bed (x2)



Dresser (x2)

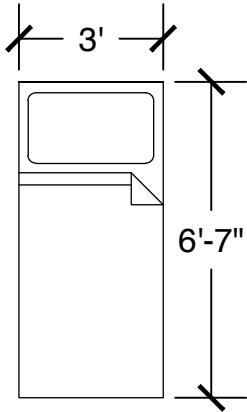


Desk w/ Hutch (x2)

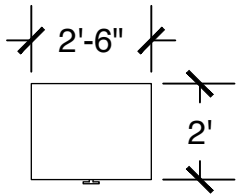


Configuration Notes:

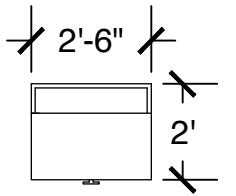
Applicable to Smith 406 and 455
 All drawings are 1/4"=1'-0" scale
 Dimensions are meant to be general figures and may not be exact



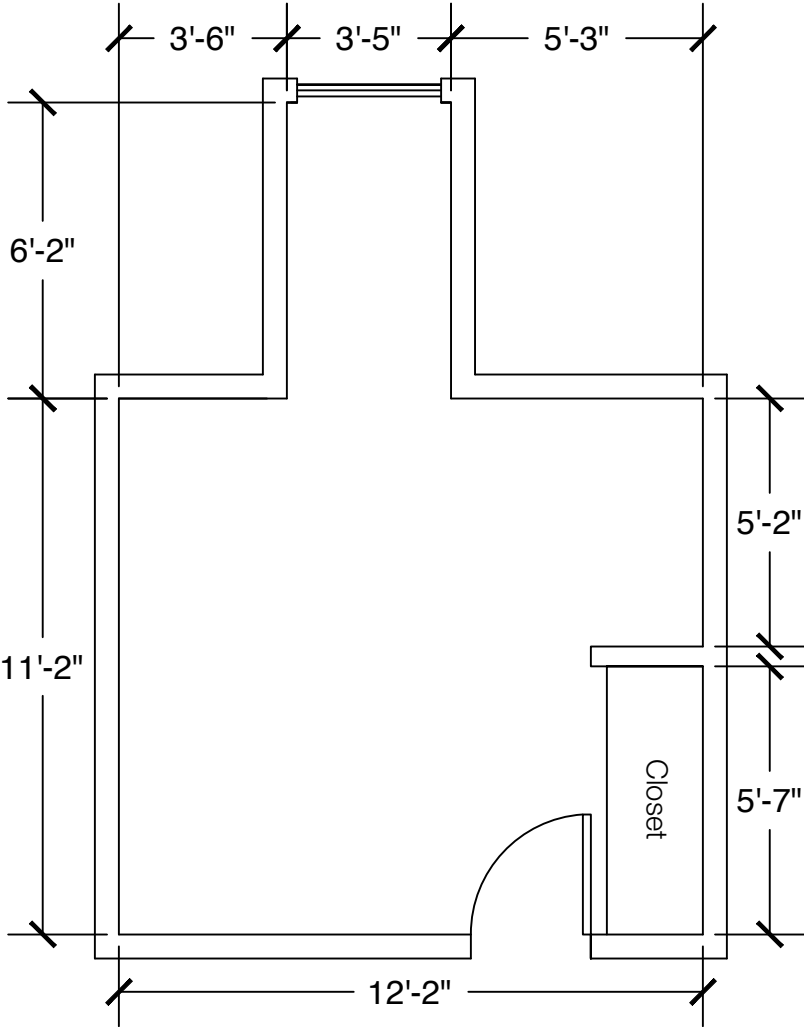
Standard Bed (x2)



Dresser (x2)

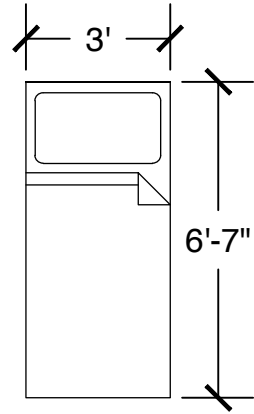


Desk w/ Hutch (x2)

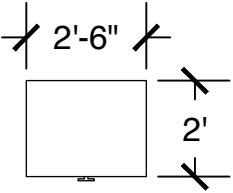


Configuration Notes:

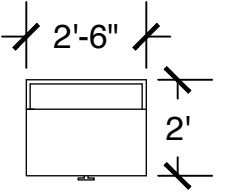
Applicable to Smith 407 and 458
 All drawings are 1/4"=1'-0" scale
 Dimensions are meant to be general figures and may not be exact



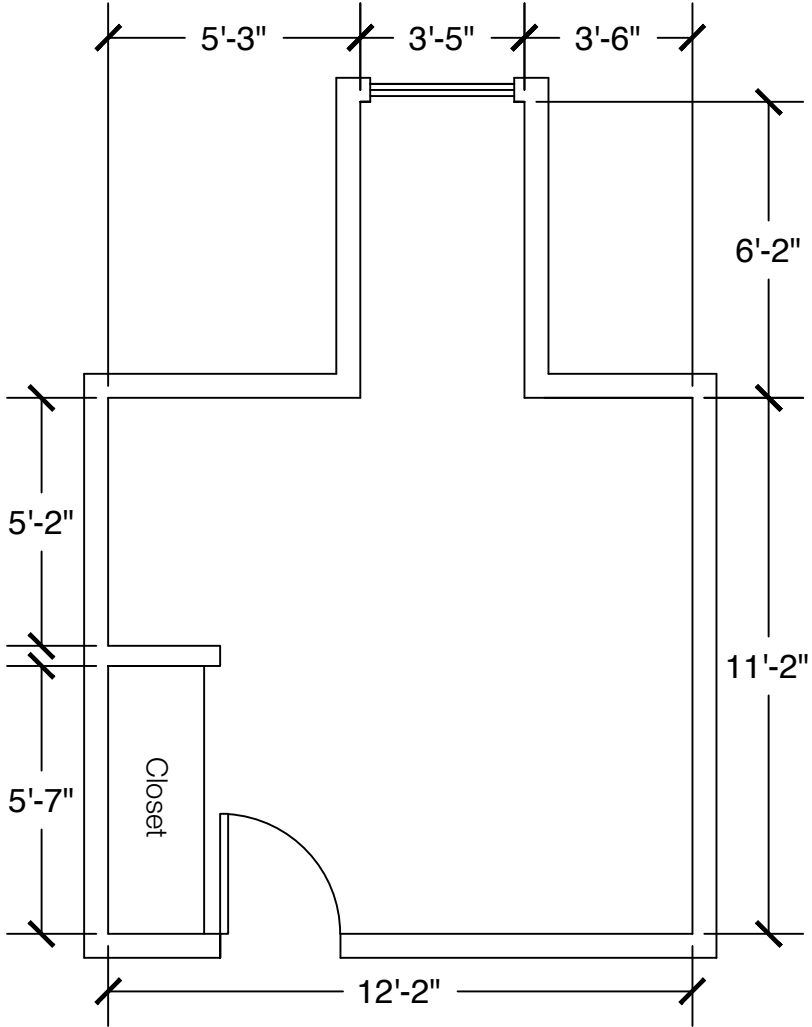
Standard Bed (x2)



Dresser (x2)

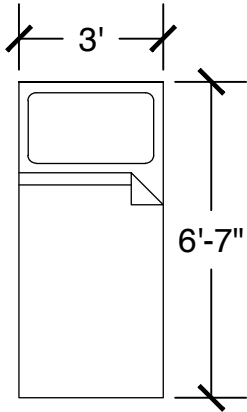


Desk w/ Hutch (x2)

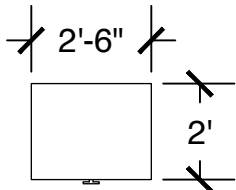


Configuration Notes:

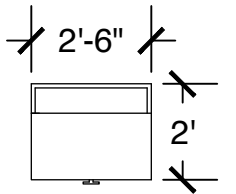
Applicable to Smith 408 and 457
 All drawings are 1/4"=1'-0" scale
 Dimensions are meant to be general figures and may not be exact



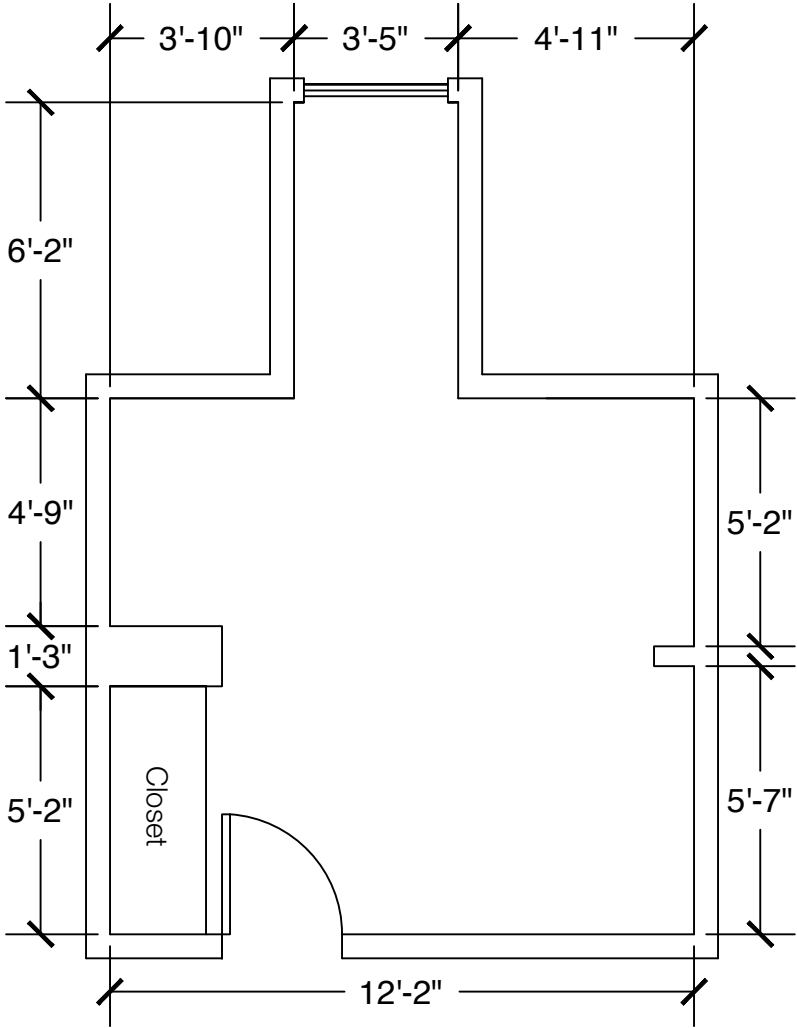
Standard Bed (x2)



Dresser (x2)

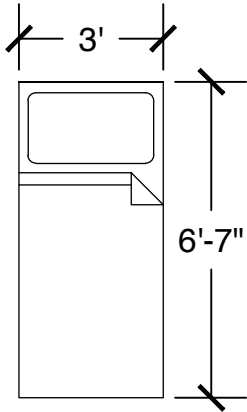


Desk w/ Hutch (x2)

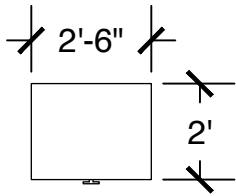


Configuration Notes:

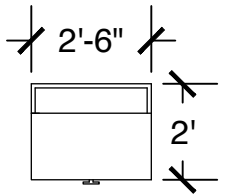
Applicable to Smith 409 and 460
 All drawings are 1/4"=1'-0" scale
 Dimensions are meant to be general figures and may not be exact



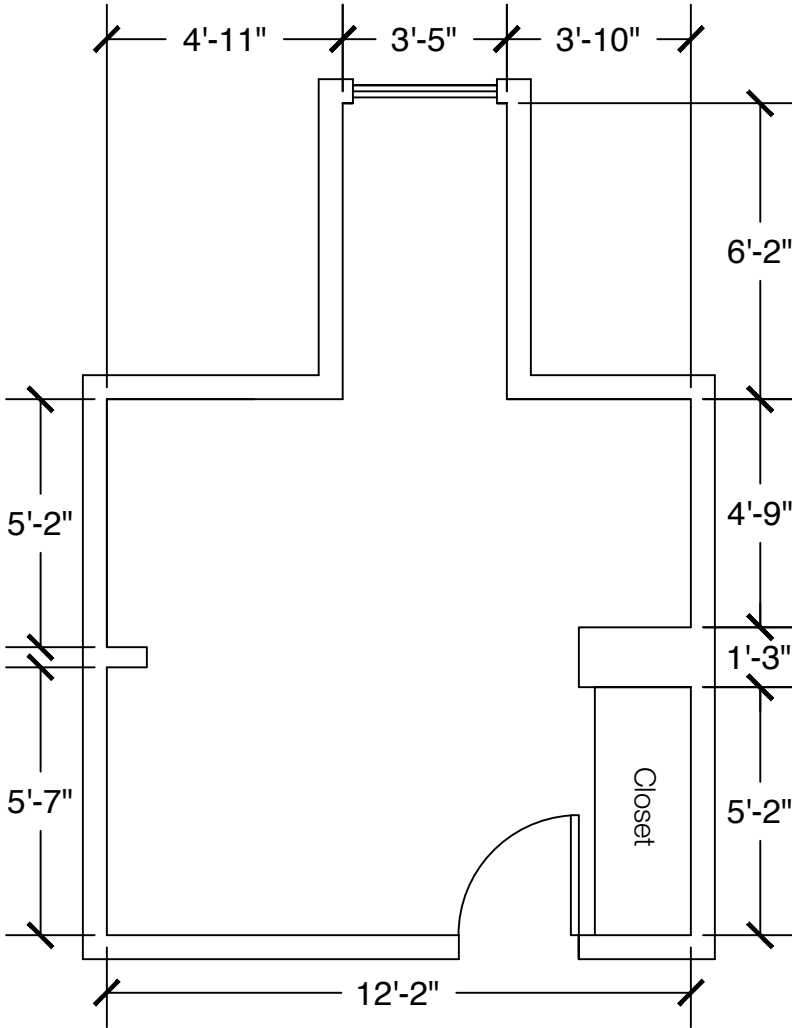
Standard Bed (x2)



Dresser (x2)

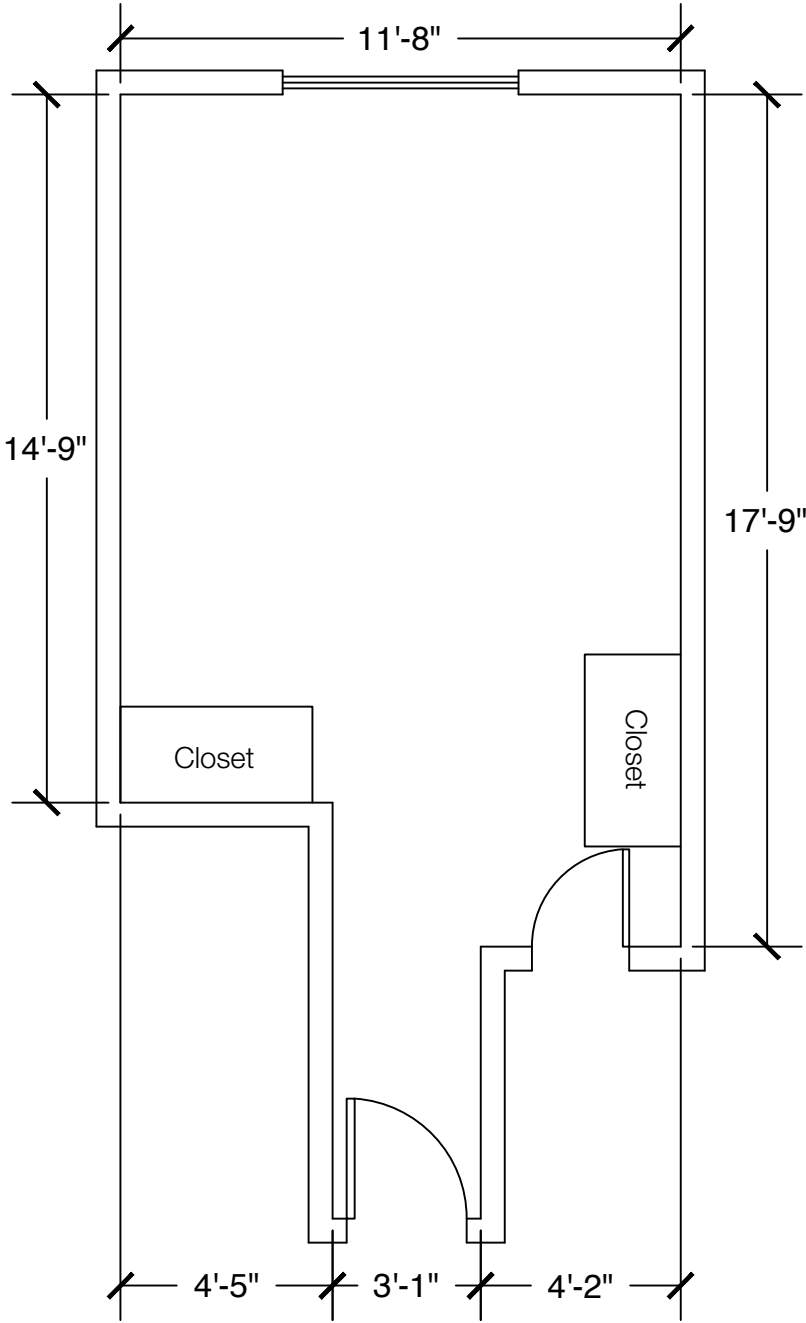
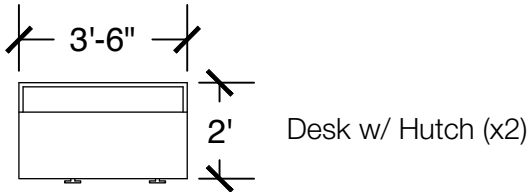
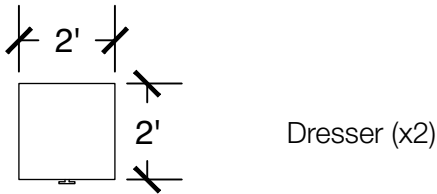
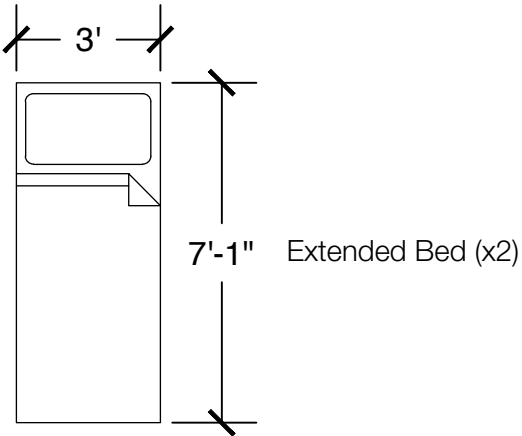


Desk w/ Hutch (x2)



Configuration Notes:

Applicable to Smith 410 and 459
 All drawings are 1/4"=1'-0" scale
 Dimensions are meant to be general figures and may not be exact



Configuration Notes:

Applicable to Smith 202 and 302
 All drawings are 1/4"=1'-0" scale
 Dimensions are meant to be general figures and may not be exact